

DEFEND YOUR HOME!

KOG Ranger Activity 9
PAGE 1



DEFENSE!
DEFENSE!

If you live around trees or large shrubs, or on the edge of a forest, wildfires could threaten your home. Making a home safe from wildfires is called building "Defensible Space" - the space around your house that protects it from wildfire. There should be a minimum of 30 feet of defensible space around your home.



DID YOU KNOW?

In the United States, over 900 homes burn in wildfires each year?



LADDER FUELS

Fire can use smaller trees and shrubs to "climb" into tops of other trees and even your house. These are called ladder fuels.

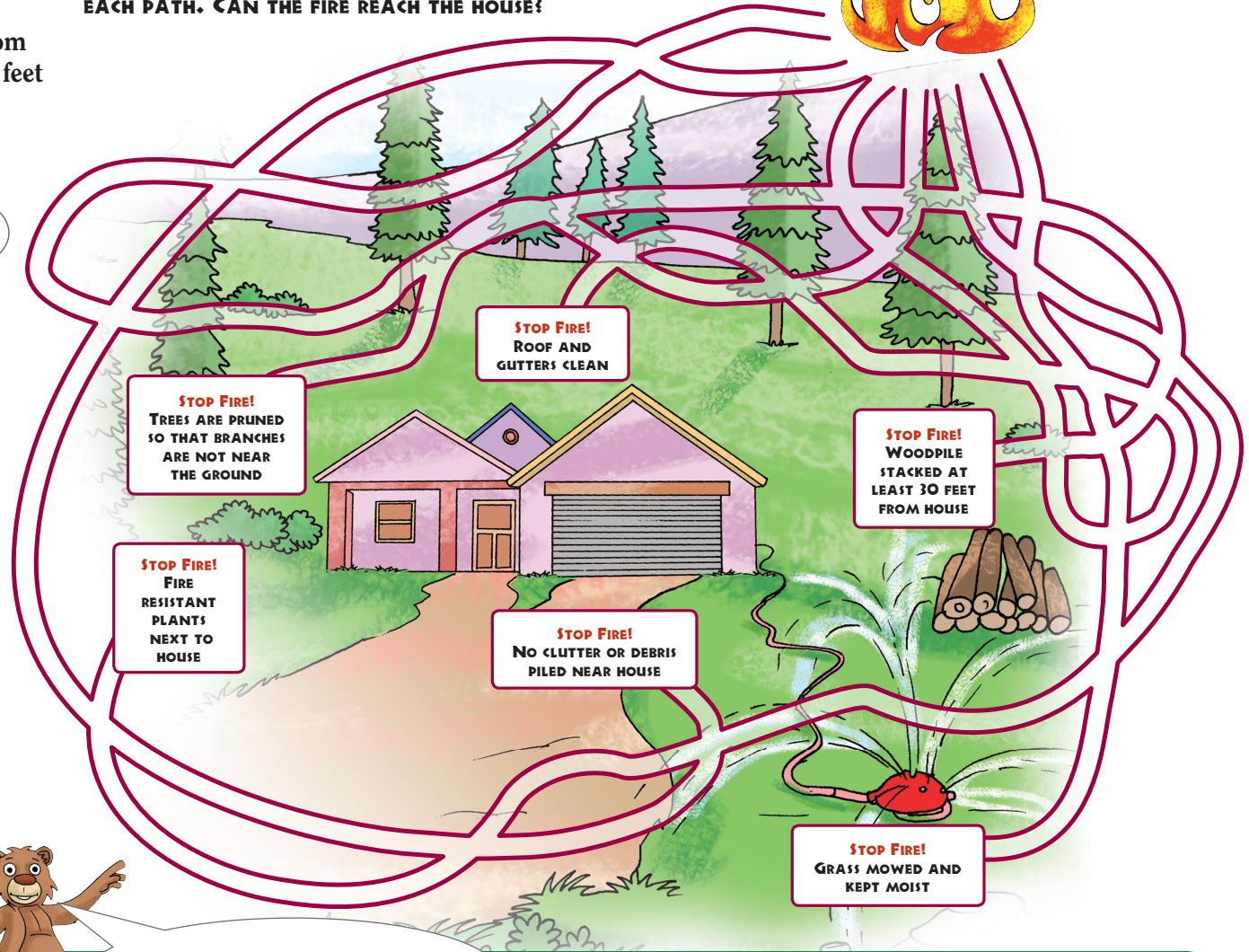


DEFENSIBLE SPACE MAZE

THIS HOUSE HAS GOOD DEFENSIBLE SPACE AROUND IT. FOLLOW EACH PATH. CAN THE FIRE REACH THE HOUSE?



START



STOP FIRE!
ROOF AND
GUTTERS CLEAN

STOP FIRE!
TREES ARE PRUNED
SO THAT BRANCHES
ARE NOT NEAR
THE GROUND

STOP FIRE!
FIRE
RESISTANT
PLANTS
NEXT TO
HOUSE

STOP FIRE!
NO CLUTTER OR DEBRIS
PILED NEAR HOUSE

STOP FIRE!
WOODPILE
STACKED AT
LEAST 30 FEET
FROM HOUSE

STOP FIRE!
GRASS MOWED AND
KEPT MOIST



WHAT KEPT THE FIRE FROM
REACHING THE HOUSE?



KEEP OREGON GREEN ASSOCIATION
PO BOX 12365, SALEM, OR 97309-
0365 503.945.7498

A cartoon illustration of a light brown squirrel with a large, bushy tail. The squirrel is standing on its hind legs, holding a nut in its paws. It has a friendly expression with a small smile. The background is a simple green and brown pattern representing foliage.

**I'D MISS MY COZY BED
AND ALL THE NUTS I
STORED FOR WINTER.**

**REMEMBER, ONLY YOU
CAN PREVENT WILDFIRES!**

LEARN MORE ABOUT THE KEEP OREGON GREEN RANGER PROGRAM AT www.keeporegongreen.org

Answers: 1. Sparks coming from chimney 2. Dirty roof 3. Branches hanging over roof 4. Ladder jacks under trees and next to house 5. Wood debris in yard 6. Tall, dry grass 7. Child playing with matches 8. Woodpile next to house 9. Gas can next to house 10. Pile of dry leaves 11. Trees with branches near ground



KEEP OREGON GREEN ASSOCIATION
PO BOX 12365, SALEM, OR 97309-
0365 503.945.7498